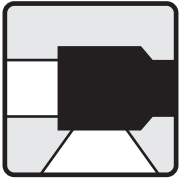
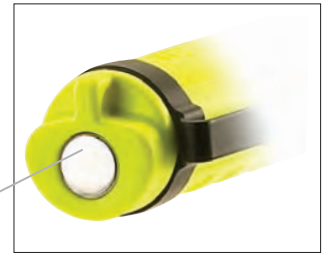


See what's ahead of you and right in front of your feet with the intrinsically safe, compact Dualie 2AA. Its bright light, which shines both ahead of you and downward, helps you avoid slips, trips and falls.



Simultaneous spot and flood modes = 175 total lumens



Integrated magnet grabs onto steel surfaces for hands-free use



Removable/reversible pocket clip

Durable, non-conductive, corrosion-proof polymer resin

Unbreakable polycarbonate lens with scratch-resistant coating

Includes 2 "AA" alkaline batteries - affordable and easy-to-find

Dual, independently operating push-button switches for spot beam, laser pointer, or both modes simultaneously
Easy to use with gloves



Flood light produces a soft, wide beam to illuminate your work area



<p>Three output modes: Spot, flood, both (spot and flood simultaneously):</p> <ul style="list-style-type: none"> - Spot: 115 lumens; 3,100 candela; 111m beam distance; runs 24 hours - Flood: 115 lumens; 75 candela; 17m beam distance; runs 24 hours - Simultaneous spot beam and flood beam: 175 lumens; runs 15 hours <p>Spot beam produces a tight beam with optimum peripheral illumination Flood beam produces a soft, wide beam to illuminate your work area</p>
Spot and flood beams intersect for an uninterrupted light pattern to eliminate blind spots
One-handed operation of all lighting modes
Rocky stipple texture for a sure grip

IPX4 water-resistant; 2 meter impact resistance tested
Class I, II, Division 1, Groups A, B, C, D, E, F, G; Class III; CL I, ZN 0, IIC; Exia; T-Code: T4
6.10" (15.5 cm); 3.9 oz. (111g) with AA alkaline batteries (included)
Limited Lifetime Warranty Visit streamlight.com for full warranty information
#67750 Dualie 2AA with two "AA" alkaline batteries - Clam packaged - Yellow #67751 Dualie 2AA with two "AA" alkaline batteries - Box - Yellow

DUALIE® 2AA

DUAL FUNCTION INTRINSICALLY SAFE AA BATTERY FLASHLIGHT

MARKET

APPLICATIONS: Industrial, Occupational Safety, Law Enforcement, Fire & Rescue, Hardware/tool, Sporting Goods, Consumer

DESCRIPTION:

The Dualie® 2AA is an intrinsically safe, high performance, 2 AA battery powered dual function LED flashlight. The flashlight features a forward facing LED spot beam and a side facing LED flood light that can be used individually or at the same time for enhanced safety. The flashlight has opposing switches for easy user activation of desired function(s). The body features a superior grip texture to provide a comfortable but slip resistant feel and is constructed of an engineered polymer resin that is virtually indestructible, shock resistant, non-conductive and light weight. The flashlight also includes an integrated magnet on the tail end and a removable and reversible metal pocket clip. The clip may be fastened either direction on the flashlight body.

CASE MATERIAL:

Impact and chemical resistant Engineered Polymer resin; v-ring sealed and vented. Class I, Division 1 models available in high visibility yellow or black. ATEX/IEC models with antistatic body and integrated & retained facecap lock available in international safety orange.

DIMENSIONS:

Length: 6.10 in. (15.5 cm) Body Diameter: 0.87 in. (2.2 cm) Face cap diameter: 1.34 in. (3.4 cm)

WEIGHT:

3.9 oz. (111 grams) with AA alkaline batteries (included in purchase).

LENS:

Unbreakable polycarbonate facecap and side lens with scratch resistant coating.

LIGHT SOURCE:

Two (2) White C4® LEDs, impervious to shock with a 50,000 hour lifetime.

LIGHT OUTPUT:

Spot - 115 lumens, 3,100 candela peak beam intensity and 111 meter beam distance.
 Flood - 115 lumens, 75 candela peak beam intensity and 17 meter beam distance.
 Spot and Flood combined - 175 lumens.

ON/OFF:

Opposing head switches for easy identification.
 Spot LED push button head switch provides one handed momentary or constant operation. Flood LED push button head switch provides on/off operation.

RUN TIME:

Spot - 24 hours to 10% of initial lumen output. See performance curve.
 Flood - 24 hours to 10% or initial lumen output.
 Spot with Flood - 15 hours to 10% initial lumen output.

BATTERY:

Two (2) "AA" size alkaline batteries. Mechanical battery polarity protection.

FEATURES:

Dual function with opposing switches for easy function identification.
 2 meter impact resistance tested.



IPx4 rated for water resistant operation. All openings sealed.

Spot beam utilizes smooth parabolic reflector for tight beam with optimum peripheral illumination.

Removable and reversible belt/pocket clip.

Corrosion proof.

APPROVALS*:


Class I, II, Division 1, Groups A, B, C, D, E, F, G; Class III; CL I, ZN 0, IIC; Exia; T-Code: T4 (approved for use with Energizer E91, Duracell MN1500 and Rayovac NO.815 alkaline batteries)



II 1G Ex ia op is IIC T3/T4 Ga; FTZU 16ATEX0120X, IECEx FTZU 16.0022X (approved for use with Duracell MN1500, Rayovac NO.815 (T4); Energizer E91, Panasonic LR6XP & LR6XWA (T3))



Ex ia op is IIC T3/T4 Ga; DNV 17.0011X

(approved with Duracell MN1500, Rayovac NO.815 (T4); Energizer E91, Panasonic LR6XP & LR6XWA (T3))



Meets applicable European Community Directives.

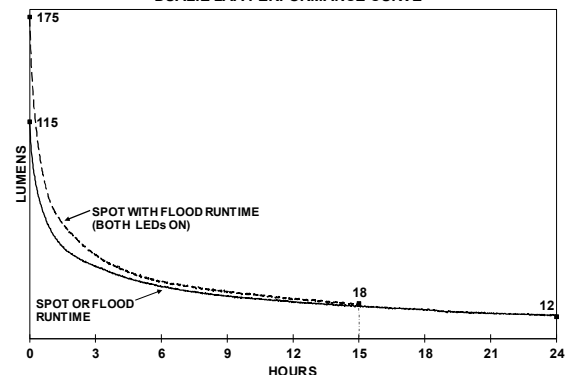
WARRANTY:

Streamlight's Limited Lifetime Warranty

OPTIONAL
ACCESSORIES:

Poly Mount Helmet Kit

DUALIE 2AA PERFORMANCE CURVE



* See product for specific ratings.

All performance claims to ANSI/PLATO FL1-2016 Standard

Issued: 10/07/2016

Revised: 06/11/2018 Rev: 3